



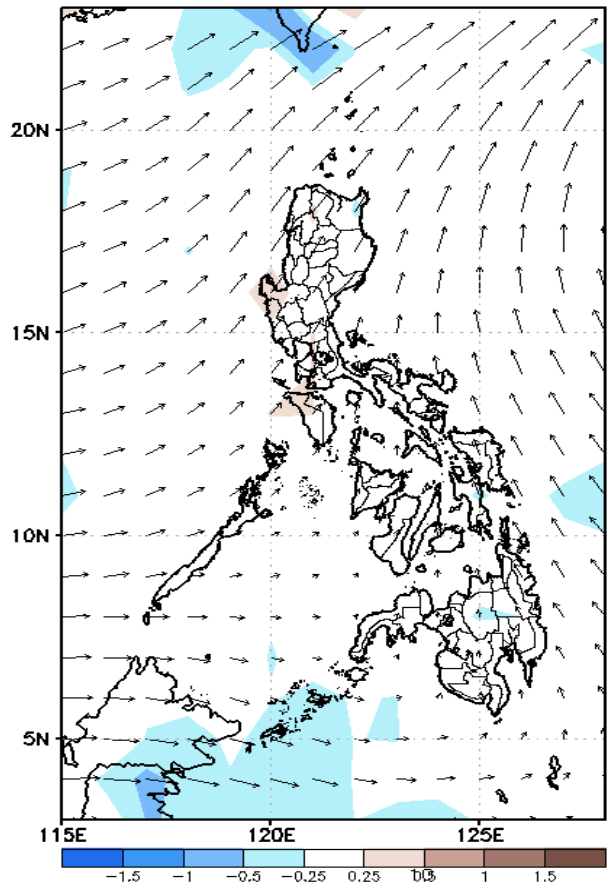
Week 1 & Week 2 Forecast for the Philippines using GEFS Model



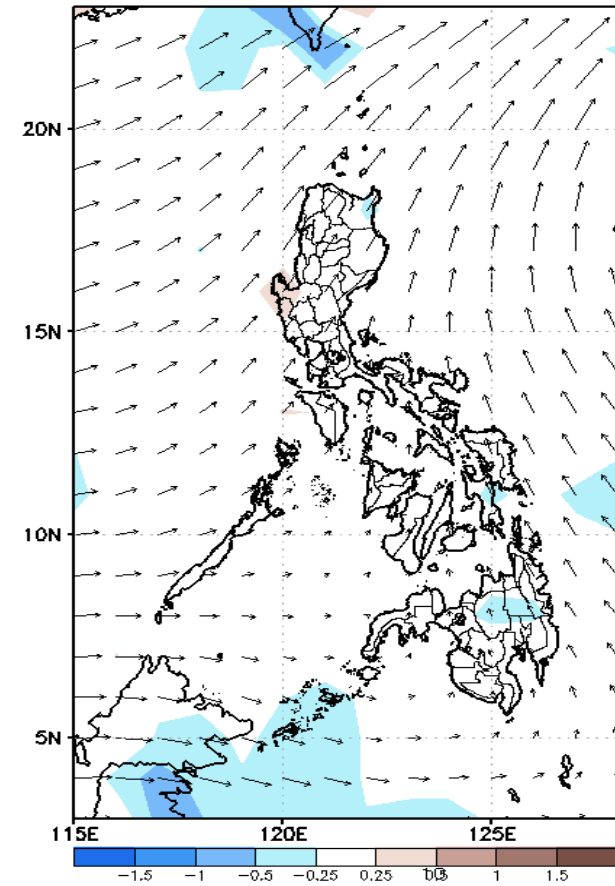
GEFS Week-1 Forecasts: Divergence & Wind Anomaly

Week 1: May 13-19, 2022

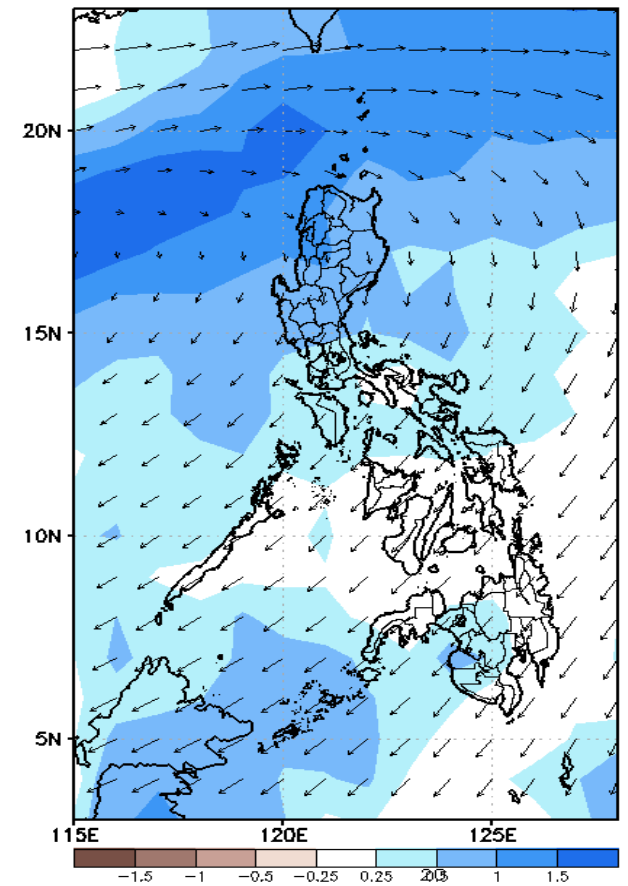
GEFS Week-1 850-hPa Divergence and Wind Anomaly
Valid: 20220513 - 20220519



GEFS Week-1 700-hPa Divergence and Wind Anomaly
Valid: 20220513 - 20220519



GEFS Week-1 200-hPa Divergence and Wind Anomaly
Valid: 20220513 - 20220519

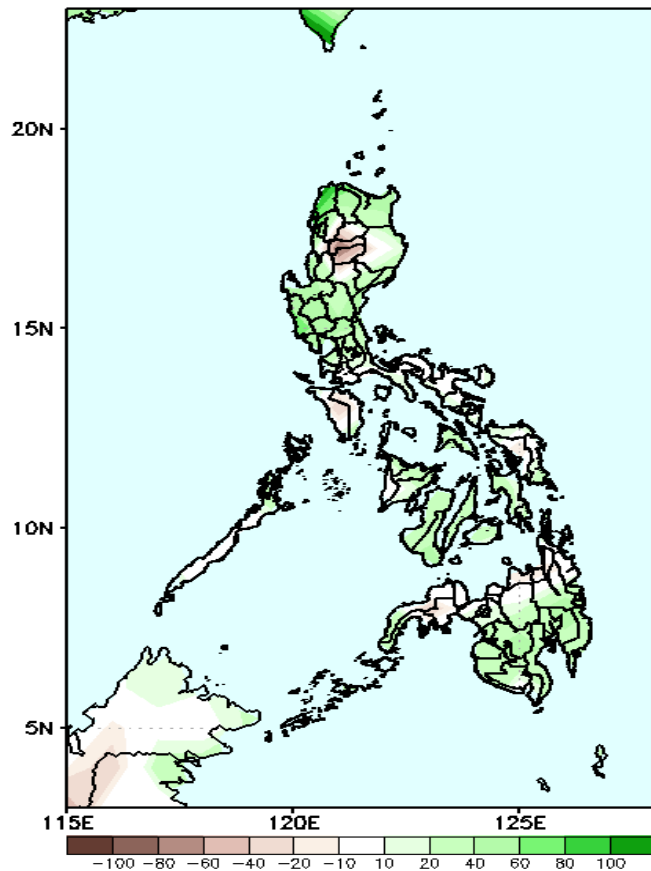


Upper and low level Divergence suggest a likelihood of light to moderate precipitation in most areas of Luzon and Western Mindanao. Easterlies affecting most parts of the country attributing to warmer temperatures during the forecast period.

Precipitation Anomaly and Exceedance Probability > 25/50 mm

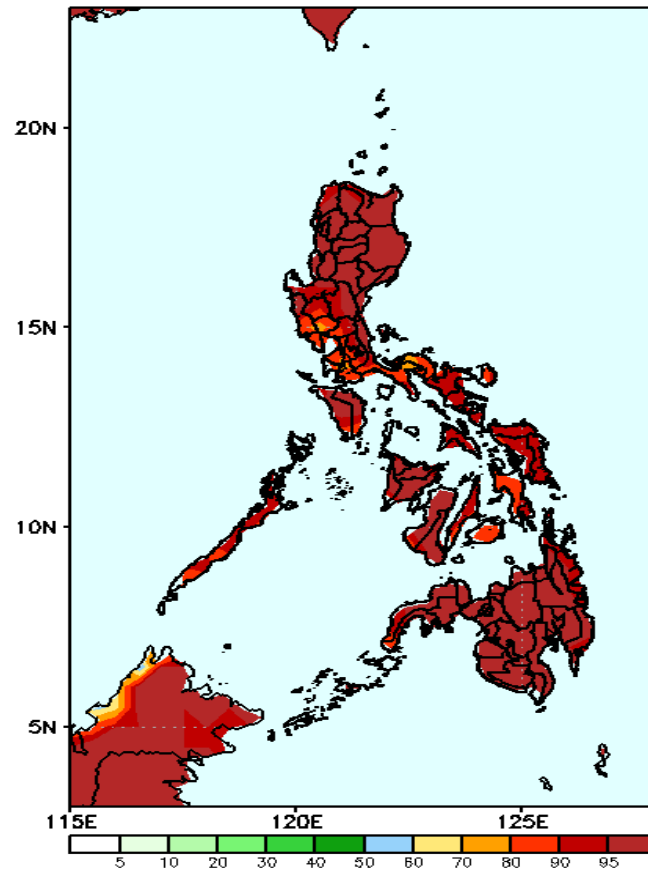
Week 1: May 13-19, 2022

GEFS Week-1 Precip Anomaly
Valid: 20220513 - 20220519



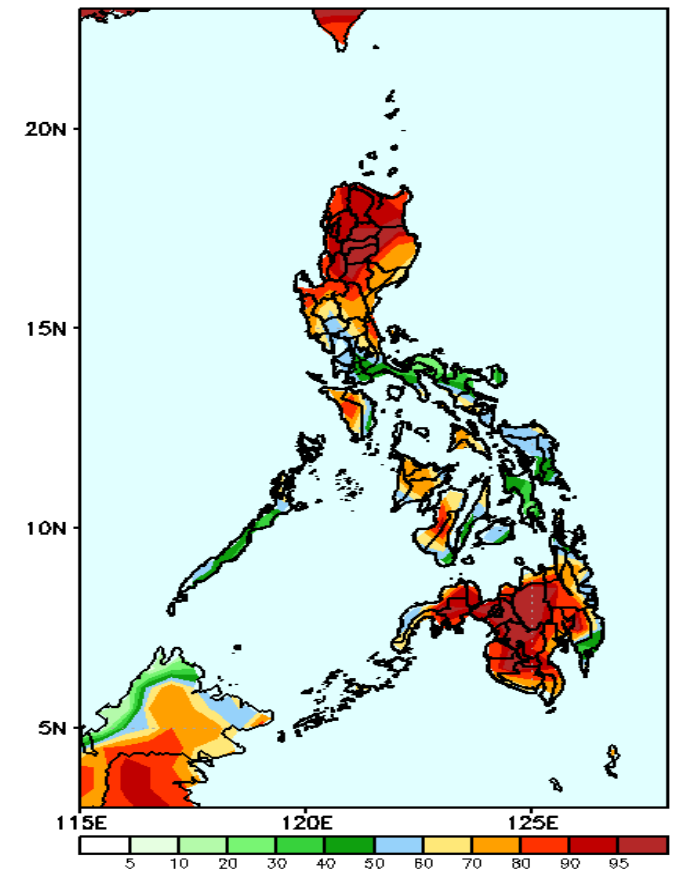
Increase of rainfall of 40-80mm in most parts of the country is expected except in Mt. Province & Ifugao where there is 40-50mm rainfall deficit the forecast period .

GEFS Week-1 Exceedance Prob. > 25mm
Valid: 20220513 - 20220519



High probability of rainfall to exceed 25mm in most parts of the country during the forecast period.

GEFS Week-1 Exceedance Prob. > 50mm
Valid: 20220513 - 20220519



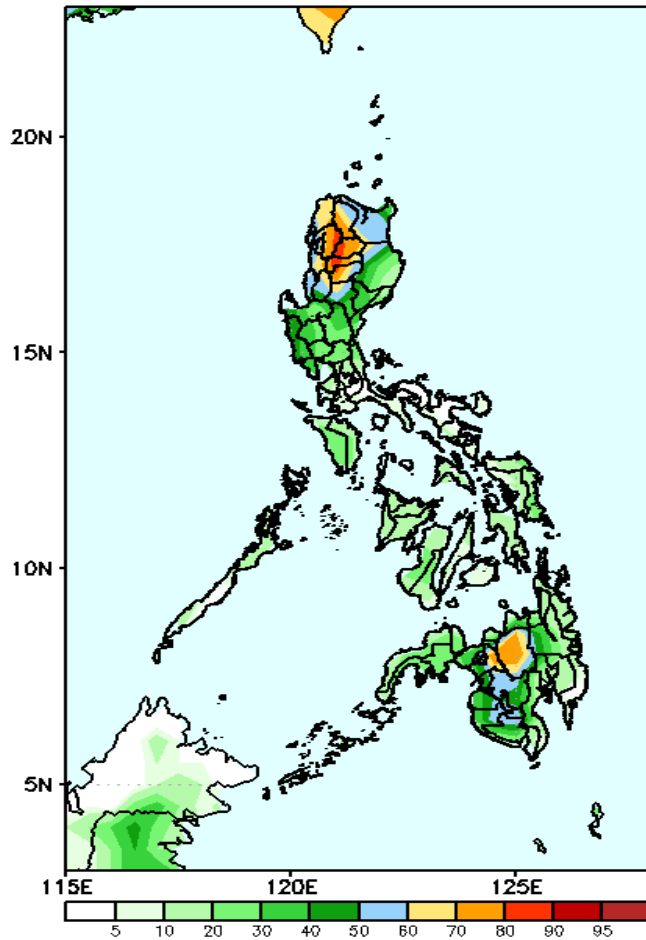
High probability of rainfall to exceed 50mm in most parts of the country except in some areas in Bicol Region and Leyte during the forecast period.



Exceedance Probability > 100/150/200 mm

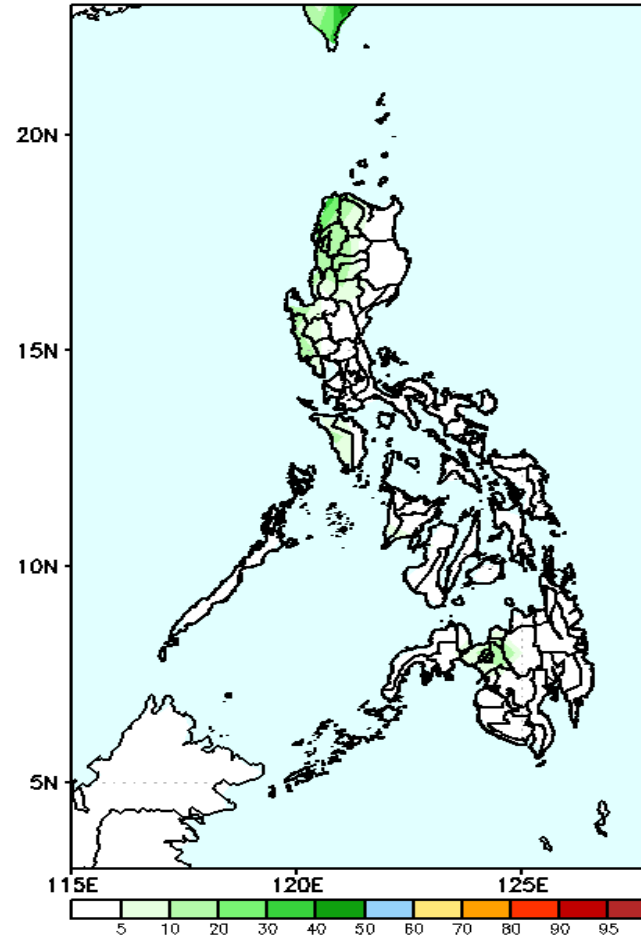
Week 1: May 13-19, 2022

GEFS Week-1 Exceedance Prob. > 100mm
Valid: 20220513 - 20220519



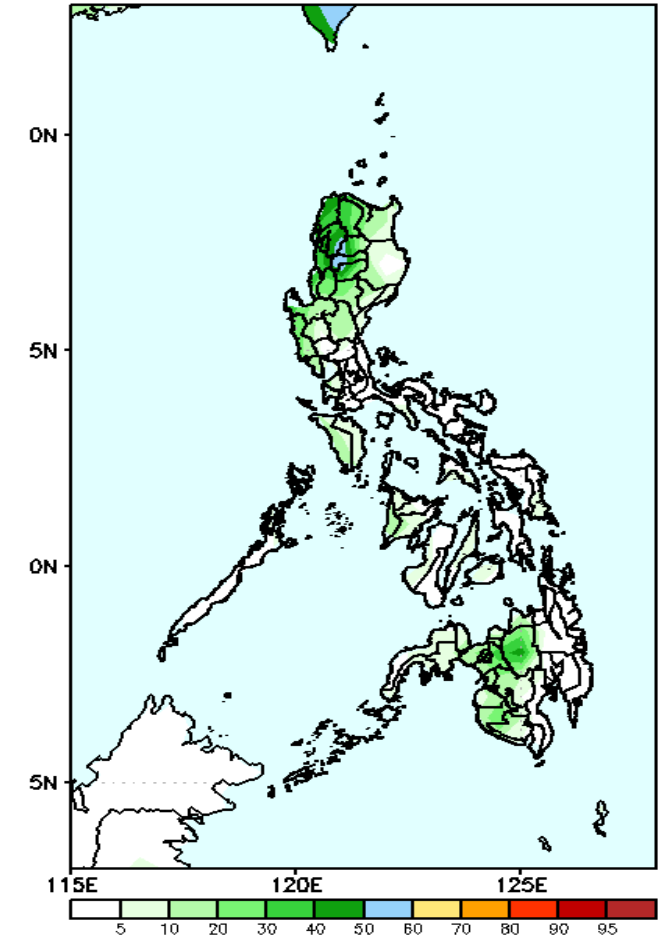
70-90% probability of rainfall to exceed 100mm in most parts of Cordillera Region and Bukidnon while less likely for the rest of the country during the forecast period.

GEFS Week-1 Exceedance Prob. > 200mm
Valid: 20220513 - 20220519



Low probability of rainfall to exceed 150mm in most parts of the country during the forecast period.

EFS Week-1 Exceedance Prob. > 150mm
Valid: 20220513 - 20220519



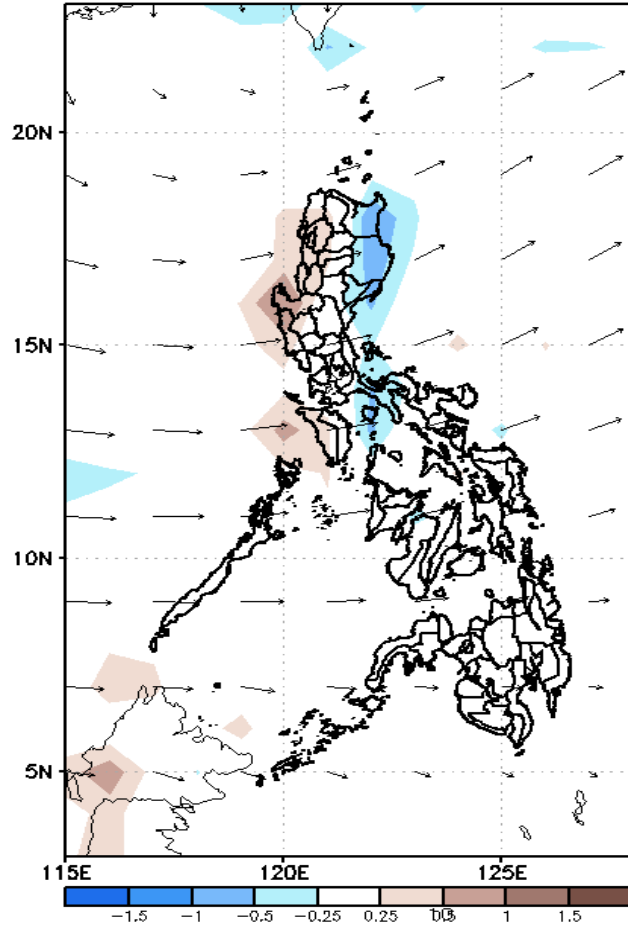
Low probability of rainfall to exceed 200mm in most parts of the country during the forecast period.



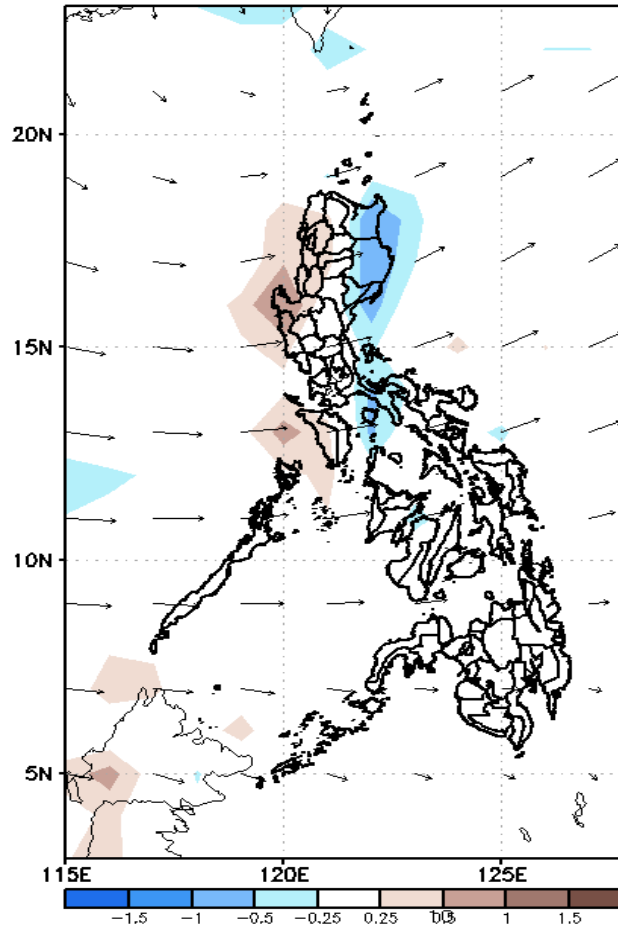
GEFS Week-2 Forecasts: Divergence & Wind Anomaly

Week 2: May 20-26, 2022

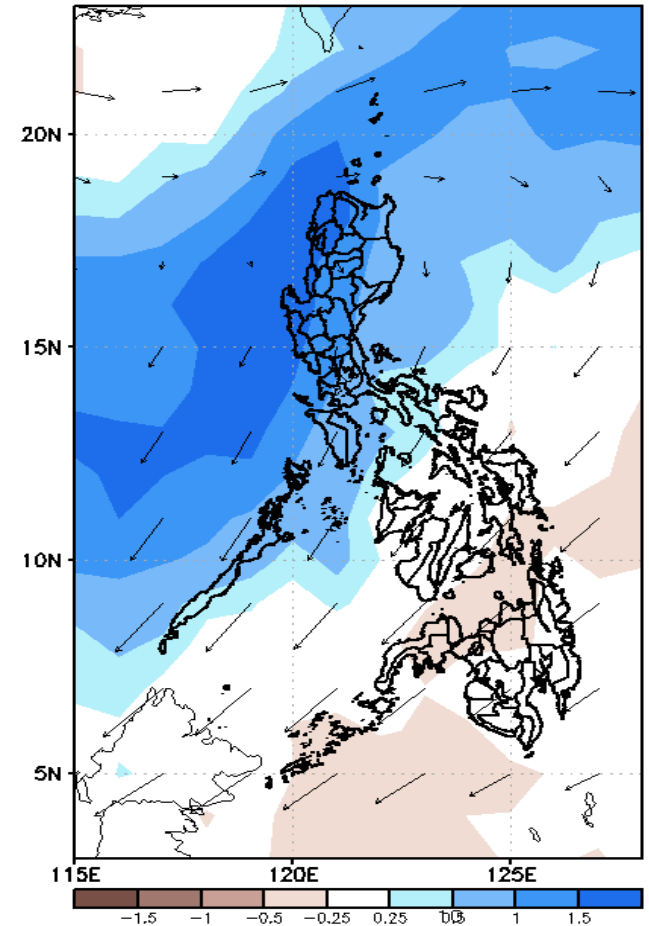
GEFS Week-2 850-hPa Divergence and Wind Anom
Valid: 20220520 - 20220526



GEFS Week-2 700-hPa Divergence and Wind Anom
Valid: 20220520 - 20220526



GEFS week-2 200-hPa Divergence and Wind Anom
Valid: 20220520 - 20220526

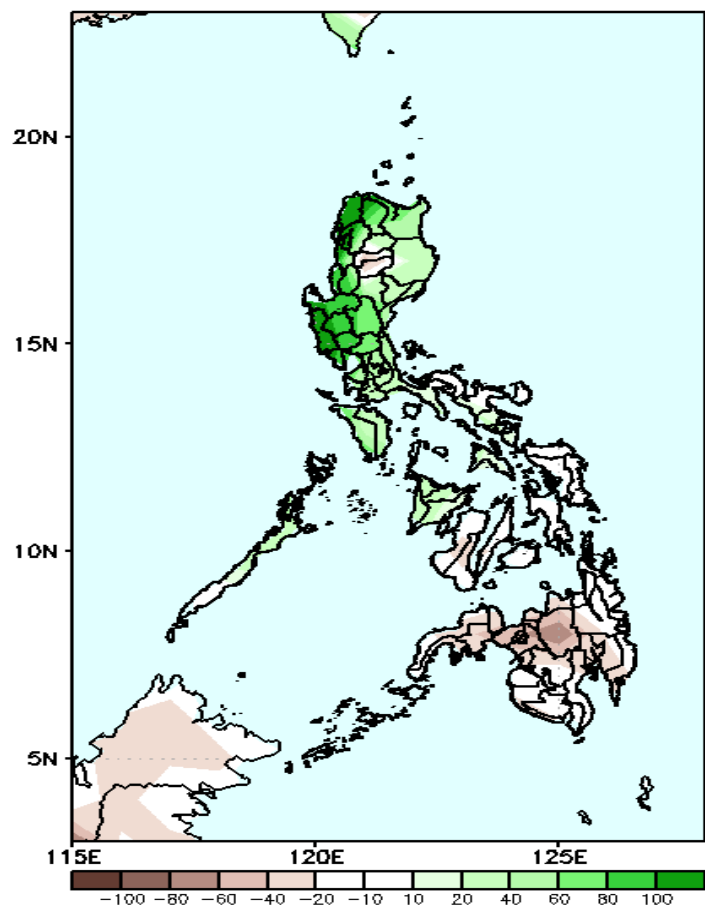


Upper and low level Divergence suggest a likelihood of light to moderate precipitation in most parts of Luzon. Southwest windflow affecting the western sections of Luzon and Visayas while Easterlies affecting most parts of the country attributing to warmer temperatures during the forecast period.

Precipitation Anomaly and Exceedance Probability > 25/50 mm

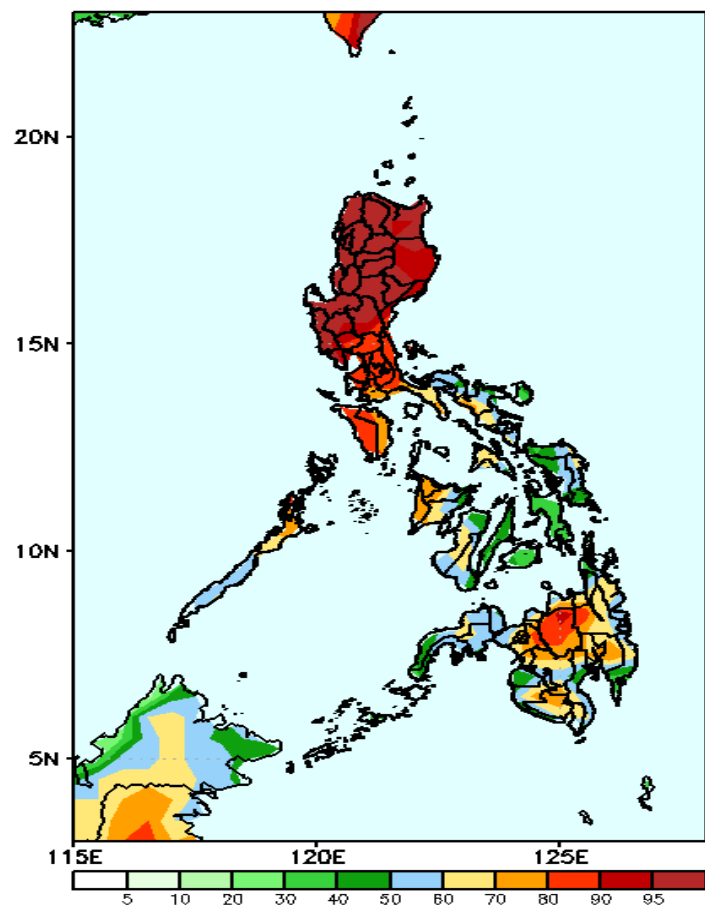
Week 2: May 20-26, 2022

GEFS Week-2 Precip Anomaly
Valid: 20220520 - 20220526



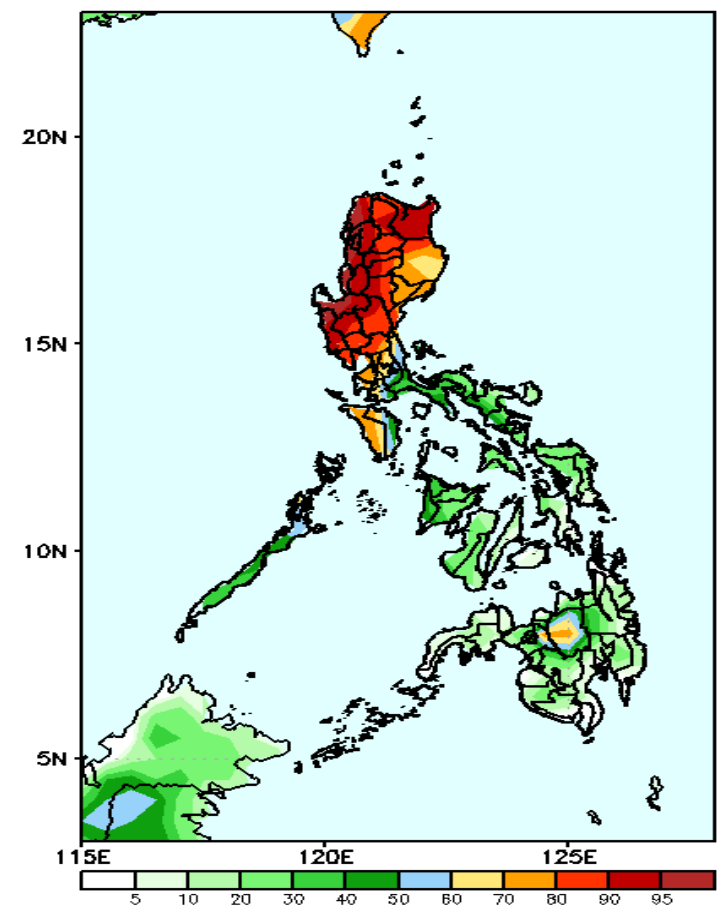
Increase of rainfall of more than 100mm in most parts of Luzon while rainfall deficit of 20-60mm in most parts of Visayas and Mindanao during the forecast period.

GEFS Week-2 Exceedance Prob. > 25mm
Valid: 20220520 - 20220526



High probability of rainfall to exceed 25mm in most parts of the country except in Leyte provinces, Cebu, Bohol and Zamboanga del Norte during the forecast period.

GEFS Week-2 Exceedance Prob. > 50mm
Valid: 20220520 - 20220526

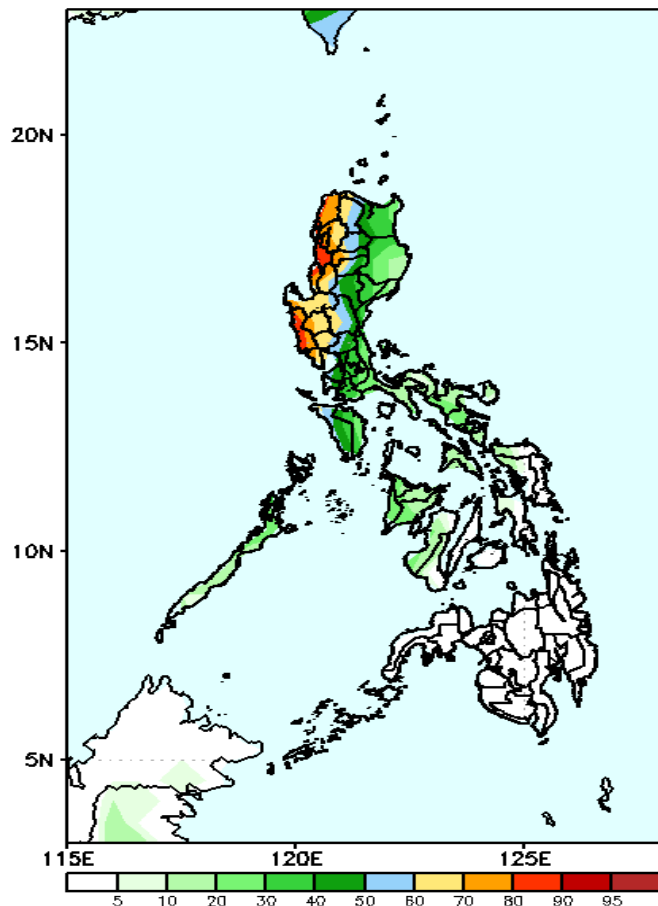


High probability of rainfall to exceed 50mm in most parts of Luzon and Bukidnon while less likely in Visayas and Mindanao during the forecast period

Exceedance Probability > 100/150/200 mm

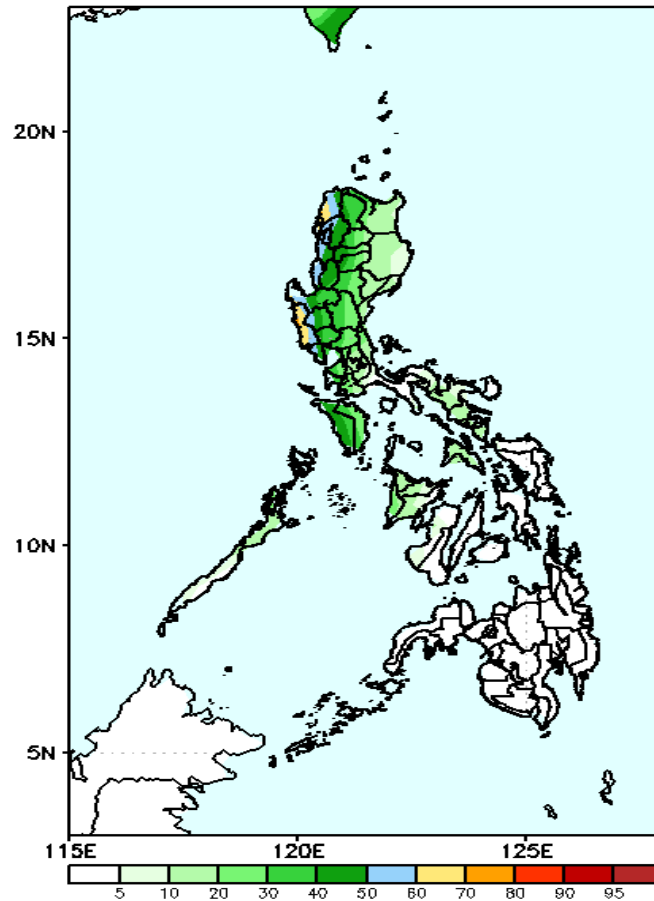
Week 2: May 20-26, 2022

GEFS Week-2 Exceedance Prob. > 100mm
Valid: 20220520 - 20220526



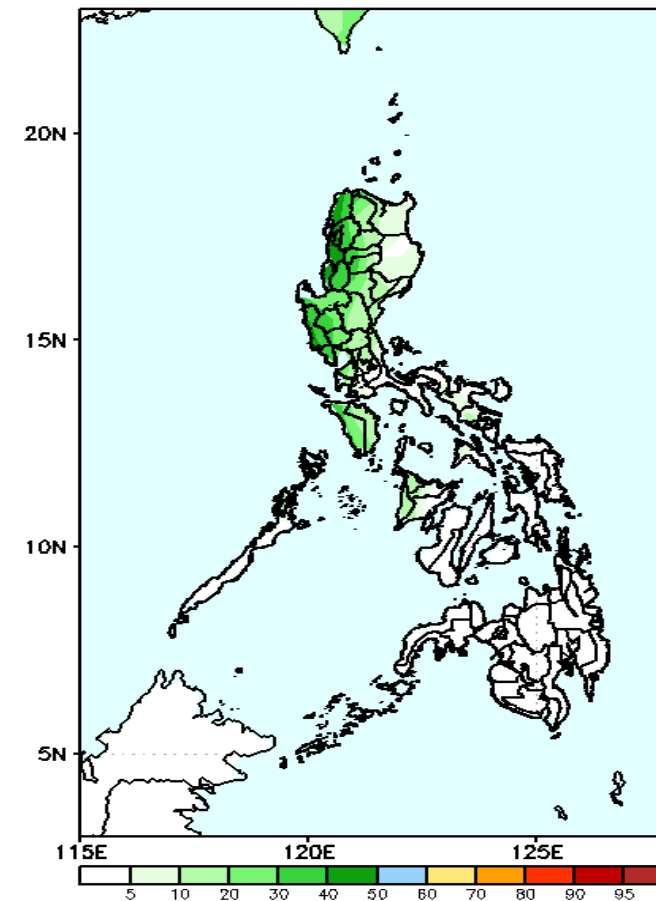
High probability of rainfall to exceed 50mm in most parts of western Luzon while less likely in Visayas and Mindanao during the forecast period.

GEFS Week-2 Exceedance Prob. > 150mm
Valid: 20220520 - 20220526



High probability of rainfall to exceed 150mm in most parts of western and central Luzon while less likely in Visayas and Mindanao during the forecast period.

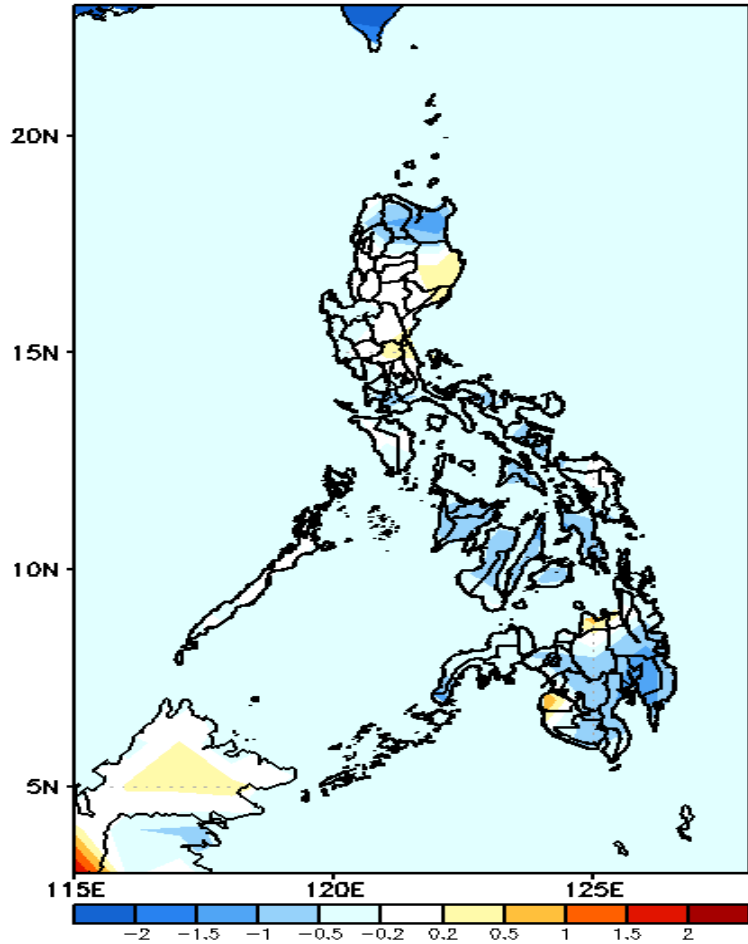
GEFS Week-2 Exceedance Prob. > 200mm
Valid: 20220520 - 20220526



Low probability of rainfall to exceed 200mm in most parts of the country except in western Luzon where there is 50-85% chance during the forecast period.

GEFS Week-1 & 2 Forecasts: T2m Anomaly

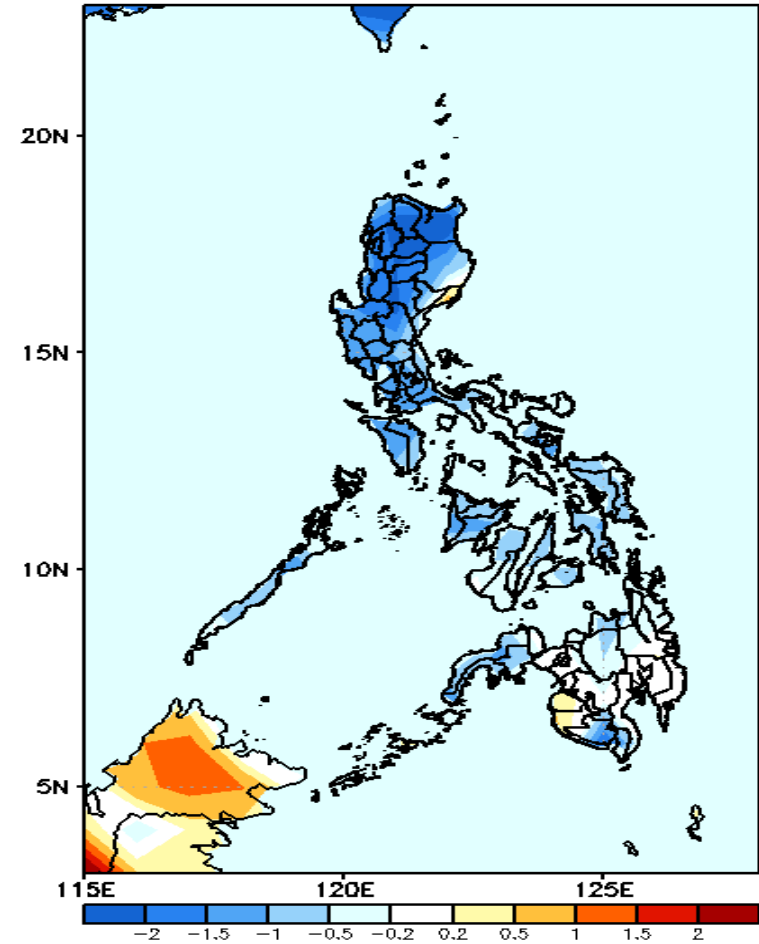
GEFS Week-1 T2m Anomaly
Valid: 20220513 - 20220519



2m Temperature Week 1: May 13-19, 2022

Average to slightly cooler than average surface air temperature will likely experience in most parts of the country during the forecast period.

GEFS Week-2 T2m Anomaly
Valid: 20220520 - 20220526



2m Temperature Week 2: May 20-26, 2022

Cooler than average surface air temperature will likely experience in most parts of Luzon and Visayas while average to slightly cooler in Mindanao during the forecast period.

